



AccuThrive.com

 Made in the U.S.A.



ACCUTHRIVE

Premium Coated Blades

MEDICAL PRODUCTS Catalog

A division of **ACCUTECH**





A Cut Above

We know that you earn patients' trust and referrals through uncompromising care and improved outcomes. You want your patients to not only recover, but to thrive. That's why when it comes to details, you compromise nothing. Your instruments are mission-critical to your success. AccuThrive's portfolio of high-performing medical blades are engineered with the precision to handle even your most challenging cases.

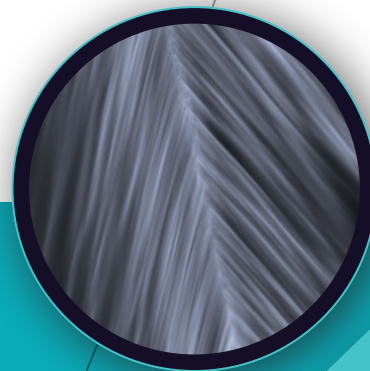
Our commitment to you:

- Blades manufactured in the U.S.A.
- Highest standards for safety and quality control
- Consistent top-quality blades
- Innovation through collaboration
- Exceptional customer support

AccuThrive. Better outcomes begin with better blades.

The MicroCoat® Difference

Our commitment to providing specialized solutions begins with our blade coating. All of our surgical, microtome and dermaplaning blades are enhanced through a proprietary process involving steel selection, heat treatment, polymer coating and precision edging to help create a smooth and resistance-free incision. Each MicroCoat variation is specifically engineered for a precise application.



See how AccuThrive offers blade solutions to help clinicians achieve optimal outcomes.

The Magic
is in the
MicroCoat!

Engineered for smooth and
resistance-free incisions

Surgical

Blades

1-4

For wound debridement and the
removal of tough tissue

Wound Care

Blades

5-6

Designed for comfort,
control and maneuverability

Dermaplaning

Blades

7-8

Procedure prep and straight-edge

Razors & Prep

Blades

9-12

For gross dissection and for use
in the laboratory

Histopathology

Blades

13-22

SURGICAL Blades



AccuThrive DermaBlade[®] with MicroCoat

DermaBlade for shave biopsy is designed to give you the flexibility to remove both surface protuberances and deep lesions, while maintaining control throughout the excision. This blade was designed with the input of a dermatologist to create a controlled excision tool with a smooth, sharp edge.



- MicroCoat enrichment – a proprietary polymer coating designed to provide a sharp, smooth blade edge
- Flexibility to remove skin protuberances including moles, warts, skin tags and shave biopsy
- Stability and control with easy-grip sides
- Enhanced user safety designed with finger grips for a no-touch blade



For more information visit [AccuThrive.com](https://www.AccuThrive.com)



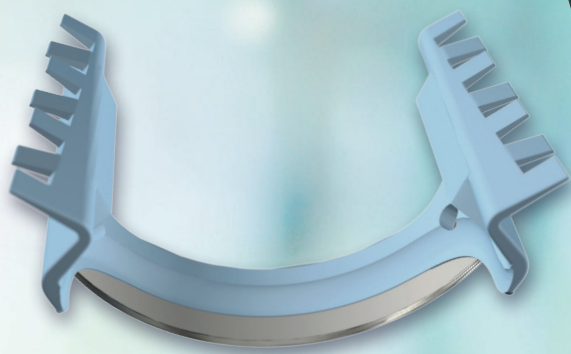
AccuThrive DermaBlade with MicroCoat

Product Information

PART NO.	DESCRIPTION	PACKING	SHIP WEIGHT (LBS)	DIMENSIONS (LxWxH)
AVSC-1135-0000	DermaBlade	400BL/CA (50BL/CT 8CT/CA)	3.50	11.50" x 10.50" x 8.50"

Additional Information

BLADE MATERIAL	Stainless Steel	EDGE TYPE	3 Facet
STERILE	Yes	COATED	Yes
BLADE THICKNESS (INCHES, MM)	0.004, 0.10		



AccuThrive Surgical Blades with MicroCoat



Proprietary coating formula

Precision-crafted blade

Guaranteed sterile

Made in the U.S.A. 🇺🇸



Our line of specialized surgical blades are coated with a proprietary MicroCoat formula designed for enhanced precision and reduced friction.

- The #10 blade is designed to provide sharpness and durability for large incisions
- The #11 blade is ideal for incisions when a sharp, straight blade is required or a pointed tip is needed to create a puncture incision
- The #15 blade is a smaller version of the #10 blade for precise incisions
- The #15C is angled for hard-to-reach areas



AccuThrive Surgical Blades with MicroCoat

Product Information

PART NO.	DESCRIPTION	PACKING	SHIP WEIGHT (LBS)	DIMENSIONS (LxWxH)
AVBL-1001-0000	#10 Surgical Blade	500BL/CA (100BL/CT 5CT/CA)	1.43	8.63"x3.88" x 2.69"
AVBL-1021-0000	#11 Surgical Blade	500BL/CA (100BL/CT 5CT/CA)	1.43	8.63"x3.88" x 2.69"
AVBL-1031-0000	#15 Surgical Blade	500BL/CA (100BL/CT 5CT/CA)	1.43	8.63"x3.88" x 2.69"
AVBL-1041-0000	#15C Surgical Blade	500BL/CA (100BL/CT 5CT/CA)	1.43	8.63"x3.88" x 2.69"
AVAN-1008-0000	Scalpel Blade Applicator & Remover Forceps	1EA/CA	.06	9.75"x3.31"x.88"
AVSC-2000-0000	#3 Scalpel Handle	5EA/CA	.012	6.69"x1.58"x.79"

Additional Information

BLADE MATERIAL	Stainless Steel	STERILE	Blades Yes Forceps and #3 Scalpel Handle No
BLADE THICKNESS (INCHES, MM)	0.015, 0.38	COATED	Yes

CE 2797



WOUND CARE Blades

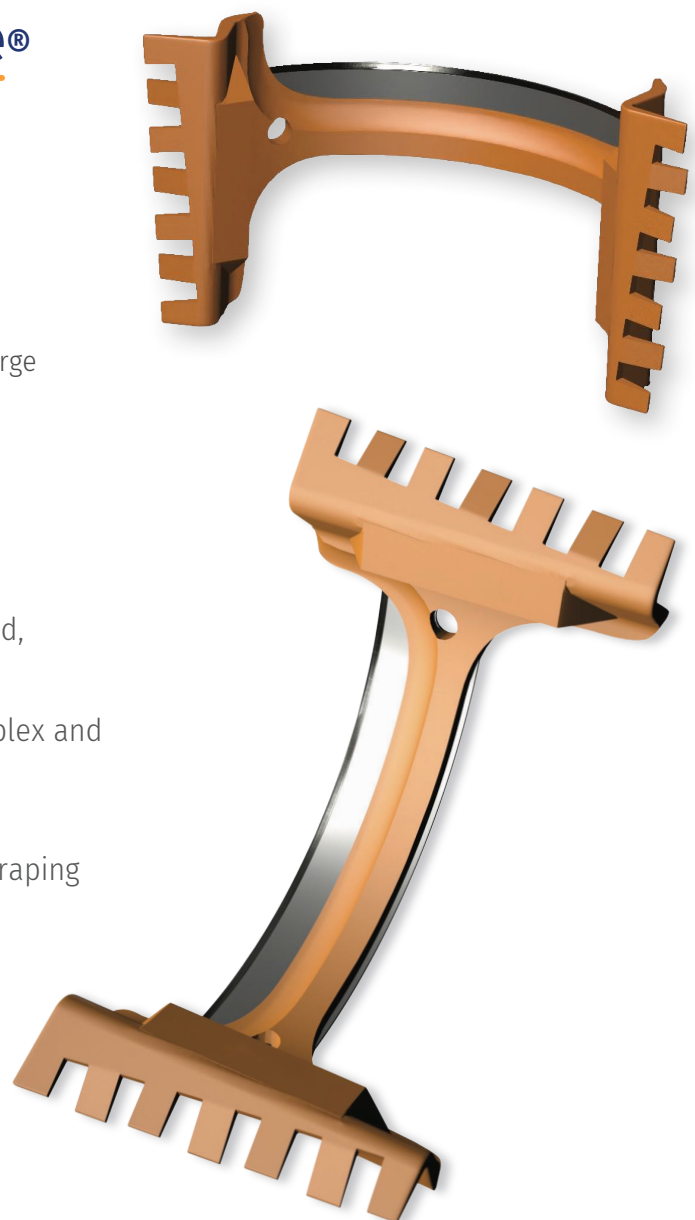


AccuThrive DebrideBlade® with MicroCoat

The DebrideBlade is used for debridement and removal of hypergranulated and other wound tissue. MicroCoat enrichment gives the blade a precise edge for a smooth, resistance-free debridement. The blade's flexibility and large surface area levels the wound bed to provide a favorable environment for healing of complex and chronic wounds.

- Removes slough, necrotic, eschar and hypergranulation tissue
- Precise leveling of a wound base and periowound, facilitating closure
- For the treatment of large surface areas of complex and chronic wounds
- A specialized MicroCoat enrichment application designed to cut through tough tissue without scraping

For more
information visit
AccuThrive.com



AccuThrive Wound Care Blades with MicroCoat

Product Information

PART NO.	DESCRIPTION	PACKING	SHIP WEIGHT (LBS)	DIMENSIONS (LxWxH)
AVSC-3000-0000	DebrideBlade	400BL/CA (100BL/CT 5CT/CA)	1.43	8.625" x 3.875" x 2.6875"
AVBL-1031-0000	#15 Surgical Blade	500BL/CA (100BL/CT 5CT/CA)	1.43	8.63" x 3.88" x 2.69"

Additional Information

BLADE MATERIAL	Stainless Steel	EDGE TYPE	3 Facet
STERILE	Yes	COATED	Yes
BLADE THICKNESS (INCHES, MM)	0.004, 0.10	STERILE	Yes
HEIGHT (INCHES, MM)	HP 0.55, 13.97 LP 0.32, 8.13	CE 2797	



DERMAPLANING Blades



#10S Dermaplane Blade



AccuThrive Dermaplane Blade with MicroCoat

Our blades for dermaplaning and aesthetic treatments are designed for comfort, control and maneuverability throughout dermaplaning procedures to achieve smooth, professional results.

- MicroCoat to reduce friction
- Precision ground steel for smoothness and comfort
- 10S rounded tip for safer handling
- Made in the U.S.A. 🇺🇸



#10 Surgical Blade

For more
information visit
[AccuThrive.com](https://www.AccuThrive.com)



AccuThrive Dermaplane Blades with MicroCoat

Product Information

PART NO.	DESCRIPTION	PACKING	SHIP WEIGHT (LBS)	DIMENSIONS (LxWxH)
AVBL-1001-0000	#10 Surgical Blade	500BL/CA (100BL/CT 5CT/CA)	1.43	8.63" x 3.88" x 2.69"
AVBL-1011-0000	#10S Dermaplane	100BL/CT (100BL/CT 5CT/CA)	1.43	8.63" x 3.88" x 2.69"
AVAN-1008-0000	Scalpel Blade Applicator & Remover Forceps	1EA/CA	.06	9.75" x 3.31" x .88"
AVSC-2000-0000	#3 Scalpel Handle	5EA/CA	.012	6.69" x 1.58" x .79"

Additional Information


BLADE MATERIAL	Stainless Steel	STERILE	Blades Yes Forceps and #3 Scalpel Handle No
BLADE THICKNESS (INCHES, MM)	0.015, 0.38	COATED	Yes



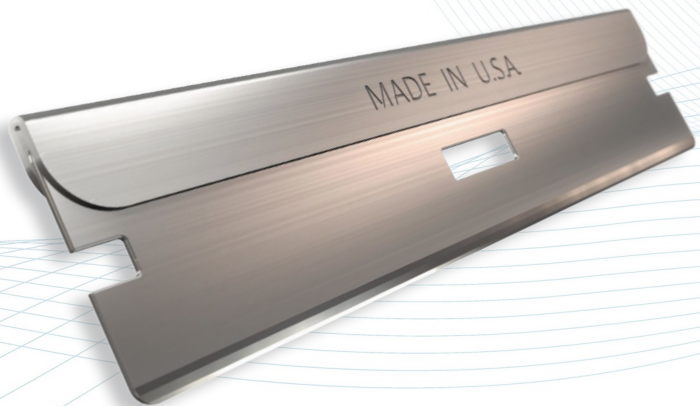
RAZORS *and* PREP Blades

AccuThrive Single/Double-Edge Prep Blades

Single-edge and double-edge prep blades are essential utility blades for surgical prep.

- MicroCoat for comfort and durability
- 3-facet edge for sharpness
- Individually wrapped for safety
- Made in the U.S.A. 

For more
information visit
[AccuThrive.com](https://www.AccuThrive.com)



AccuThrive Single-Edge Prep Blades

The single-edge prep blade is an essential utility blade for procedure prep.



- MicroCoat technology for comfort and durability
- Corrosion-resistant high quality stainless steel
- Individually wrapped for safety
- Precision-ground and honed for sharpness
- 2.25" length for extra cutting surface
- Fits Weck and other classic hair shaper handles and the Webster skin graft handle



AccuThrive Double-Edge Prep Blades

The double-edge prep blade is an essential utility blade for procedure prep.

- MicroCoat technology for comfort and durability
- Corrosion-resistant high-quality stainless steel
- Individually wrapped for safety
- Precision-ground and honed for sharpness



For more
information visit
AccuThrive.com

AccuThrive Single/Double-Edge Prep Blades

Product Information

PART NO.	DESCRIPTION	PACKING	SHIP WEIGHT (LBS)	DIMENSIONS (LxWxH)
AVBL-3001-0000	Double-Edge Prep wrapped	100BL/CT (10CT/CA)	2.01	6.80" x 4.90" x 3.30"
AVBL-3002-0000	Double-Edge Prep wrapped	250BL/CT (20CT/CA)	10.67	9.12" x 8.00" x 7.00"
AVBL-4000-0000	Single-Edge Prep wrapped	250BL/CT (20CT/CA)	32.63	10.25" x 9.5" x 8.25"
AVBL-4001-0000	Single-Edge Prep wrapped	5BL/CT (10CT/CA)	0.35	2.94" x 1.70" x 2.70"

Additional Information

BLADE MATERIAL	Stainless Steel		HEIGHT (INCHES, MM)	Double-Edge 0.75, 19.05 Single-Edge 0.525, 13.34
BLADE THICKNESS (INCHES, MM)	Double-Edge 0.004, 0.10 Single-Edge 0.009, 0.23		EDGE TYPE	3 Facet
LENGTH (INCHES, MM)	Double-Edge 1.5, 38.10 Single-Edge 2.258, 57.35		COATED	Yes
			CORNER	Round



General practitioners and surgeons rely on our prep razors to be among the sharpest, most reliable blades in the industry. Innovative technology ensures each stainless steel blade is ground and honed to the highest quality. Prep razors are Comfort Coated® for super smooth shaves.

DERMAGARD® SAFETY DOUBLE-EDGE PREP RAZOR

- Comfort Coated stainless steel blade
- Wrapped blade technology protects from nicks and cuts
- Built-in comb to lift and separate hair

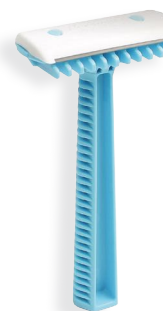


Product Information

PART NO.	DESCRIPTION	PACKING	SHIP WEIGHT (LBS)	DIMENSIONS (LxWxH)
75-4005	Razor, Personna® DermaGard® Safety DE Prep	100/BOX 10 BOX/CA	30.48	28.19"x10.44"x18.76"

DOUBLE EDGE PREP RAZOR

- Comfort Coated stainless steel blade
- Built-in combs to lift and separate hair



Product Information

PART NO.	DESCRIPTION	PACKING	SHIP WEIGHT (LBS)	DIMENSIONS (LxWxH)
75-4004	Razor, Personna Premium DE Prep	100/BOX 10 BOX/CA	30.85	28.19"x10.44"x18.7"



TRIPLE BLADE FACE RAZOR

- Pivot head
- Ergonomic handle
- Blue/Black
- Vitamin E & Aloe lubricating strip
- Rubber grip handle provides superior control even when wet
- Comfort Coated blades made in the U.S.A.



PERSONNA TWIN BLADE FACE RAZORS

- Fixed head
- Standard & long handles
- Comfort Coated blades made in the U.S.A.

Product Information

PART NO.	DESCRIPTION	PACKING	SHIP WEIGHT (LBS)	DIMENSIONS (LxWxH)
AVTL-5010-0000	Razor, Triple blade	1/BG 100 BG/CA	3.96	14.95" x 12.57" x 4.77"
75-0017	Razor, Twin blade, Fixed head, Long handle, Lube strip	10/BG 10 BG/CA	2.04	13.51" x 6.45" x 3.95"
75-0022	Razor, Twin blade, Fixed head Standard handle	50/CT 10 CT/CA	6.85	22.07" x 12.01" x 6.02"

VAL-U-SHAVE™ FACE RAZOR

- Twin blade
- Fixed head
- Standard handle



PERSONNA SINGLE BLADE FACE RAZOR

- Single blade
- Fixed head
- Standard handle



PART NO.	DESCRIPTION	PACKING	SHIP WEIGHT (LBS)	DIMENSIONS (LxWxH)	PART NO.	DESCRIPTION	PACKING	SHIP WEIGHT (LBS)	DIMENSIONS (LxWxH)
75-1032	Razor, Twin blade, Fixed head, blue	50/CT 10 CT/CA	6.90	22.07" x 12.01" x 6.02"	75-0003	Razor, Single blade, Fixed head, white	50/CT 10 CT/CA	6.75	22.07" x 12.01" x 6.02"

HISTOPATHOLOGY Blades

AccuThrive Longevity Microtome Blade

Long-Term Sectioning

Preserves sharpness for up to 500 cuts

Made in the U.S.A. 🇺🇸

The Longevity microtome blade for routine sectioning is designed to give you the maximum number of cuts per blade while maintaining high performance. Our coating and heat-treating process produces a blade that helps increase efficiency without sacrificing effectiveness.

- Designed to be effective for long-term sectioning
- Reduces handling frequency, downtime and waste
- Packaged in easy-to-use dispenser

For more
information visit
AccuThrive.com



AccuThrive Histopathology Blades with MicroCoat

Product Information

PART NO.	DESCRIPTION	PACKING	SHIP WEIGHT (LBS)	DIMENSIONS (LxWxH)
AVBL-2008-0000	High Profile, .012"	10BL/DISP; 10DISP/CS	2.0	5.25"x4.75"x7.5"
AVBL-2009-0000	High Profile, .012"	50BL/DISP; 10DISP/CS	4.3	5.25"x5.00"x7.5"
AVBL-2010-0000	Low Profile, .010"	10BL/DISP; 10DISP/CS	1.8	5.25"x4.75"x7.5"
AVBL-2011-0000	Low Profile, .010"	50BL/DISP; 10DISP/CS	2.5	5.25"x4.75"x7.5"

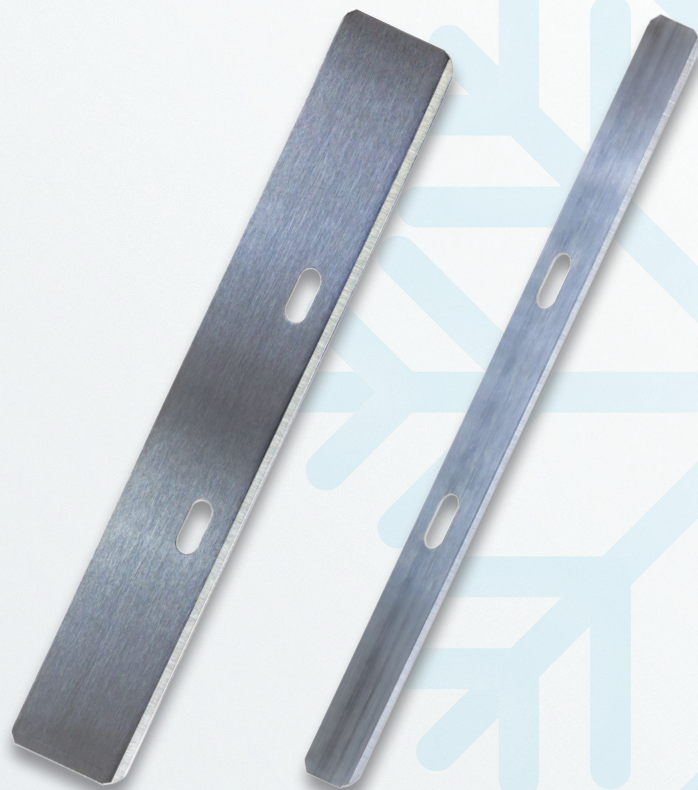
Additional Information

BLADE MATERIAL	Stainless Steel	EDGE TYPE	3 Facet
BLADE THICKNESS (INCHES, MM)	HP 0.012, 0.30 LP 0.01, 0.25	COATED	Yes
LENGTH (INCHES, MM)	3.15, 80.01	CORNER	Rounded
HEIGHT (INCHES, MM)	HP 0.55, 13.97 LP 0.32, 8.13		



AccuThrive Vitality Microtome Blade

Frozen Tissue Sectioning
Ease of Starting a Ribbon
Made in the U.S.A. 🇺🇸



The Vitality microtome blade is engineered to provide an effective solution for your frozen tissue sectioning needs. Our coating and heat-treating process produces a blade that can cut a clear section in a time-dependent environment for instant diagnosis through cryosectioning.

- Designed for frozen tissue sampling in cryostat machines
- Exceptional clarity
- Packaged in easy-to-use dispenser



AccuThrive Histopathology Blades with MicroCoat

Product Information

PART NO.	DESCRIPTION	PACKING	SHIP WEIGHT (LBS)	DIMENSIONS (LxWxH)
AVBL-2020-0000	High Profile, .012"	10BL/DISP 10DISP/CA	2.0	5.25" x 5.00" x 7.5"
AVBL-2021-0000	High Profile, .012"	50BL/DISP 10DISP/CA	4.3	5.25" x 5.00" x 7.5"
AVBL-2022-0000	Low Profile, .010"	10BL/DISP 10DISP/CA	1.8	5.25" x 5.00" x 7.5"
AVBL-2023-0000	Low Profile, .010"	50BL/DISP 10DISP/CA	2.5	5.25" x 5.00" x 7.5"


Additional Information

BLADE MATERIAL	Stainless Steel	EDGE TYPE	3 Facet
BLADE THICKNESS (INCHES, MM)	HP 0.012, 0.30 LP 0.01, 0.25	COATED	Yes
LENGTH (INCHES, MM)	3.15, 80.01	CORNER	Rounded
HEIGHT (INCHES, MM)	HP 0.55, 13.97 LP 0.32, 8.13		



AccuThrive Agility Microtome Blade



Soft Tissue Sectioning
Exceptional Clarity
Made in the U.S.A. 

The Agility microtome blade is ideal for soft-tissue specimens that require the cleanest cut for the clearest diagnosis. It is coated with a proprietary MicroCoat formula designed to perform consistently on a wide variety of soft tissues.

- Provides uniform ribboning, reduced compression and reduced knife lines
- Edge-angle engineering for uniform sectioning and clarity
- Packaged in easy-to-use dispenser



AccuThrive Histopathology Blades with MicroCoat

Product Information

PART NO.	DESCRIPTION	PACKING	SHIP WEIGHT (LBS)	DIMENSIONS (LxWxH)
AVBL-2004-0000	High Profile, .012"	10BL/DISP 10DISP/CA	2.0	5.25" x 5.00" x 7.5"
AVBL-2005-0000	High Profile, .012"	50BL/DISP 10DISP/CA	4.3	5.25" x 5.00" x 7.5"
AVBL-2006-0000	Low Profile, .010"	10BL/DISP 10DISP/CA	1.8	5.25" x 5.00" x 7.5"
AVBL-2007-0000	Low Profile, .010"	50BL/DISP 10DISP/CA	2.5	5.25" x 5.00" x 7.5"

Additional Information

BLADE MATERIAL	Stainless Steel	EDGE TYPE	3 Facet
BLADE THICKNESS (INCHES, MM)	HP 0.012, 0.30 LP 0.010, 0.25	COATED	Yes
LENGTH (INCHES, MM)	3.15, 80.01	CORNER	Rounded
HEIGHT (INCHES, MM)	HP 0.55, 13.97 LP 0.32, 8.13		



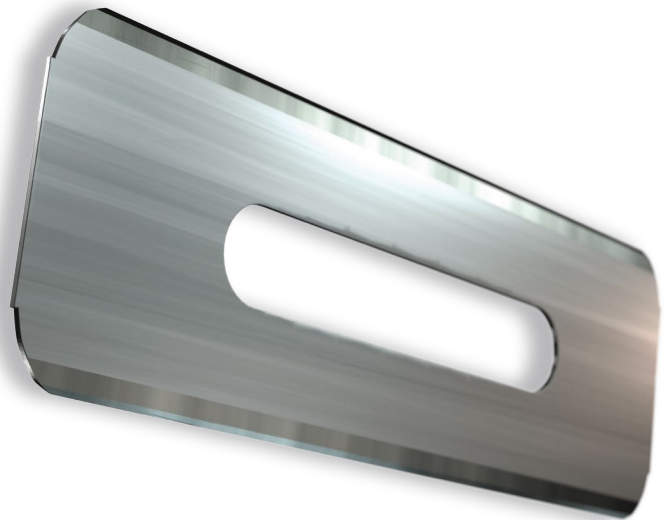
AccuThrive Double-Edge Pathology Blade

Gross Dissection

Medium-sized specimens

Tissue Sampling

Made in the U.S.A. 



Our double-edge pathology blade is designed to help pathologists hand-trim specimens. AccuThrive disposable pathology blades are intended for use in the gross dissection of soft-tissue samples.

- Fits Pathco handle
- Rounded corners for safer handling
- Double-edge for larger surface area
- Carbon steel for a durable, long-lasting cutting edge
- Individually wrapped for safety



AccuThrive Histopathology Blades

Product Information

PART NO.	DESCRIPTION	PACKING	SHIP WEIGHT (LBS)	DIMENSIONS (LxWxH)
AVBL-3000-0000	Blade, DE Pathology, wrapped	100BL/CT (10CT/CA)	6.6	8.50" x 6.4" x 3.3"

Additional Information

BLADE MATERIAL	Carbon	EDGE TYPE	3 Facet
BLADE THICKNESS (INCHES, MM)	0.015, 0.38	COATED	No
LENGTH (INCHES, MM)	2.25, 57.15	CORNER	Rounded
HEIGHT (INCHES, MM)	0.75, 19.05		



AccuThrive 130/260mm Trimming Blades



Large/Medium Specimens

Hand-Sectioning

Corrosion-resistant high-quality stainless steel

Made in the U.S.A. 

Product Information

PART NO.	DESCRIPTION	PACKING	SHIP WEIGHT (LBS)	DIMENSIONS (LxWxH)
AVBL-4002-0000	130mm Trimming Blade	10EA/BG 5BG/CT 10CT/CA	5.70	8.50" x 6.25" x 3.50"
AVBL-4003-0000	260mm Trimming Blade	10EA/BG 5BG/CT 10CT/CA	11.39	12.50" x 8.50" x 3.50"

Additional Information

BLADE MATERIAL	Stainless Steel	EDGE TYPE	3 Facet
BLADE THICKNESS (INCHES, MM)	0.01, 0.25	COATED	No
LENGTH (INCHES, MM)	5.12, 130.00 10.24, 260.00	CORNER	Square
HEIGHT (INCHES, MM)	0.725, 18.42		



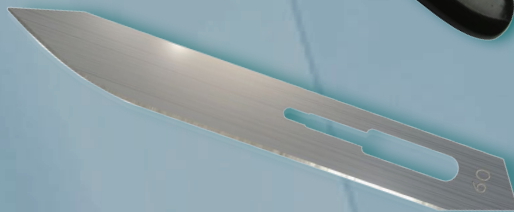
AccuThrive Histopathology Blades

Product Information

PART NO.	DESCRIPTION	PACKING	SHIP WEIGHT (LBS)	DIMENSIONS (LxWxH)
AVBL-4000-0000	Single-Edge Prep	250BL/CT 20CT/CA	32.63	10.25" x 9.50" x 8.25"
AVBL-4001-0000	Single-Edge Prep	5BL/CT 10CT/CA	0.35	2.94" x 1.70" x 2.70"
AVBL-1090-0000	#60 Autopsy Blade	150 BL/CT 1CT/CA	1.00	8.25" x 4.75" x 3.94"
ANTL-1000-0000	AccuPoint® #8 Handle for #60 Blades	5HNDL/CT 1CT/CA	.40	5.5" x 2.75" x .875"

Additional Information

BLADE MATERIAL	Stainless Steel	STERILE	No
BLADE THICKNESS (INCHES, MM)	Single-Edge 0.009, 0.23 #60 Autopsy 0.022, 0.56	COATED	Single-Edge Yes #60 Autopsy No





ACCUTHRIVE

MEDICAL DIVISION | AccuTec

Verona, VA 24482

(800) 457-2222

(540) 245-2221

Info@AccuThrive.com

[AccuThrive.com](https://www.AccuThrive.com)

 Made in the U.S.A.

AV-1029 V9

©2024 AccuTec, Inc. All rights reserved.
AccuThrive®, MicroCoat® DermaBlade® and
DebrideBlade® are registered trademarks of
AccuTec, Inc.